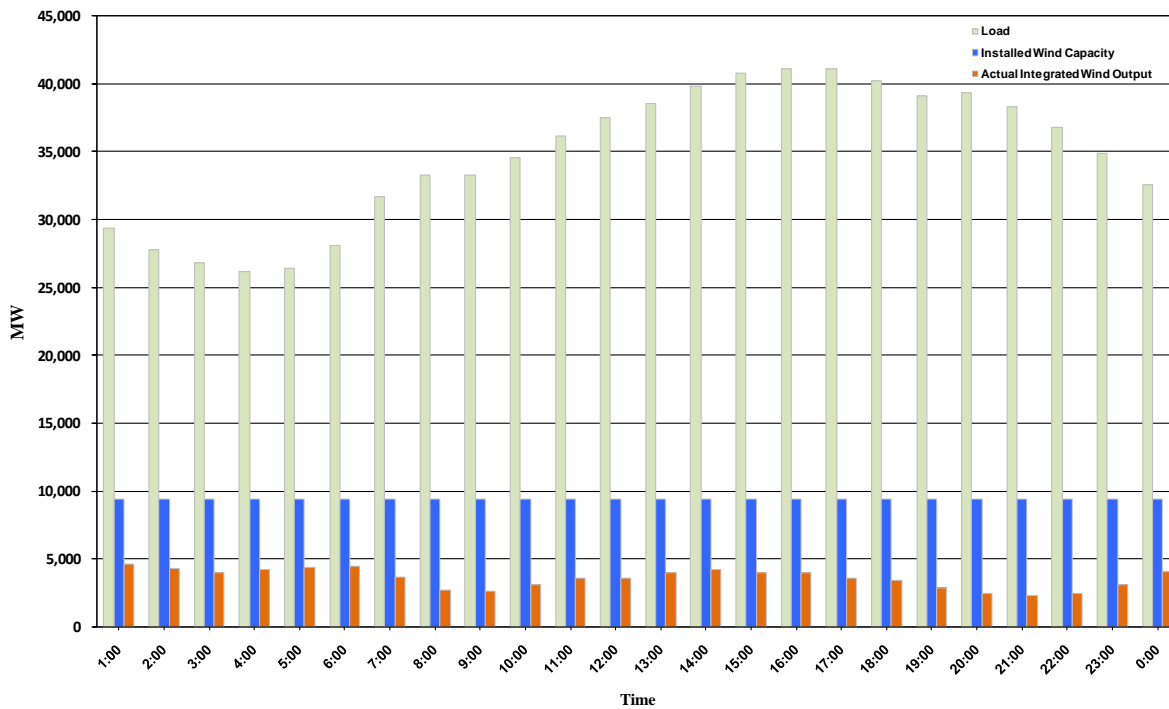




ERCOT Grid Operations Wind Integration Report: 10/22/10

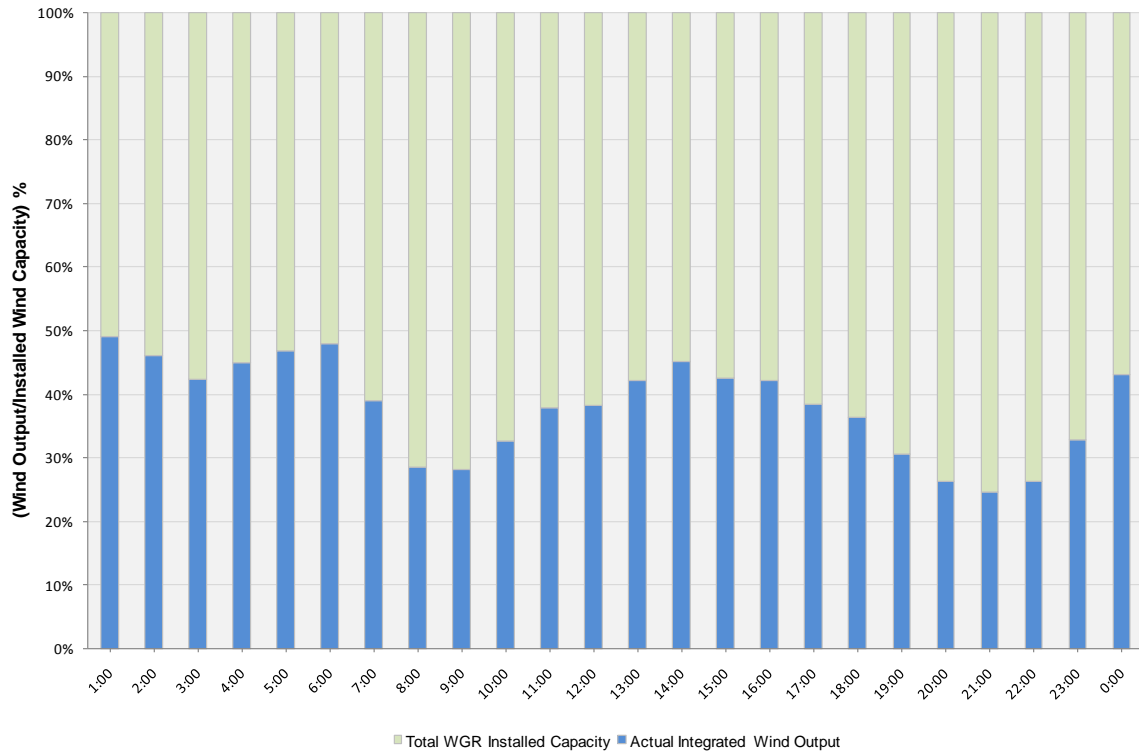
Peak Load	41,136 MW
Load Peak Hour	17
Wind Record 06/12/10	7016 MW
Max Wind value	4720 MW
Wind Peak Hour	00:00:36
Wind Integration %	15.57

Hourly Average Actual Load vs. Actual Wind Output
10-22-2010

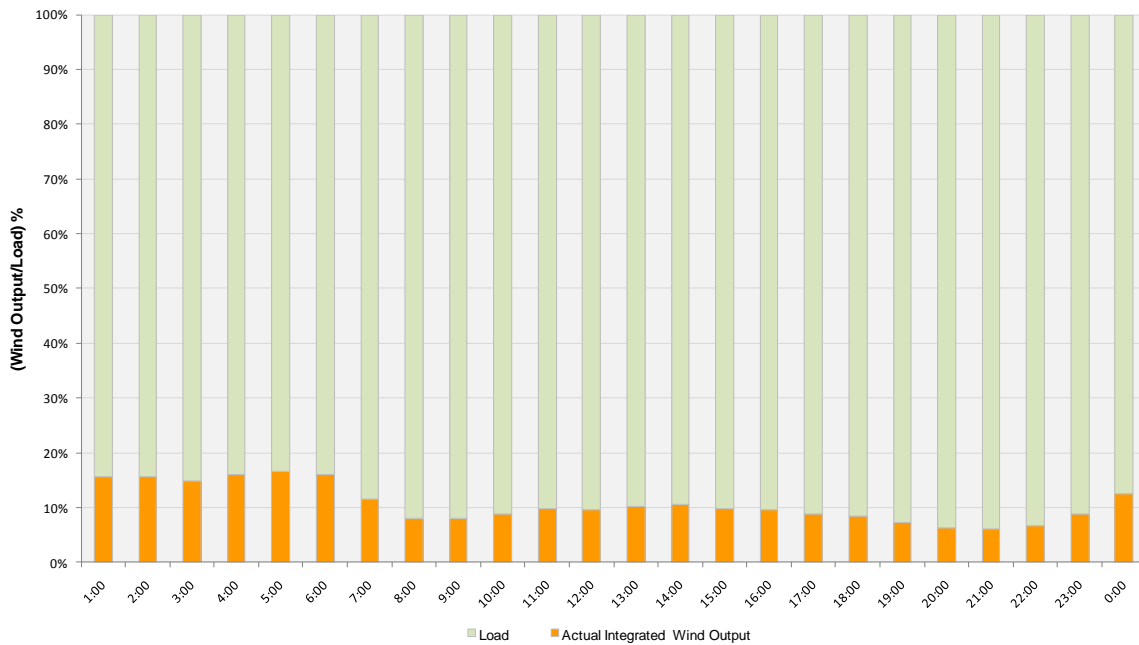




Actual Wind Output as a Percentage of the Total Installed Wind Capacity
10-22-2010



Actual Wind Output as a Percentage of the ERCOT Load
10-22-2010





ERCOT Load vs. Actual Wind Output 10/15/10 - 10/22/10

